

*Relax with a good feeling!*

Thanks for your purchase, you're awesome!

Did you know that Tropilex donate 1% of your purchase to plant trees worldwide? 🌴

**You bought a handmade Hammock / Hanging Chair from Colombia**

*And this are the people who made your hammock:*



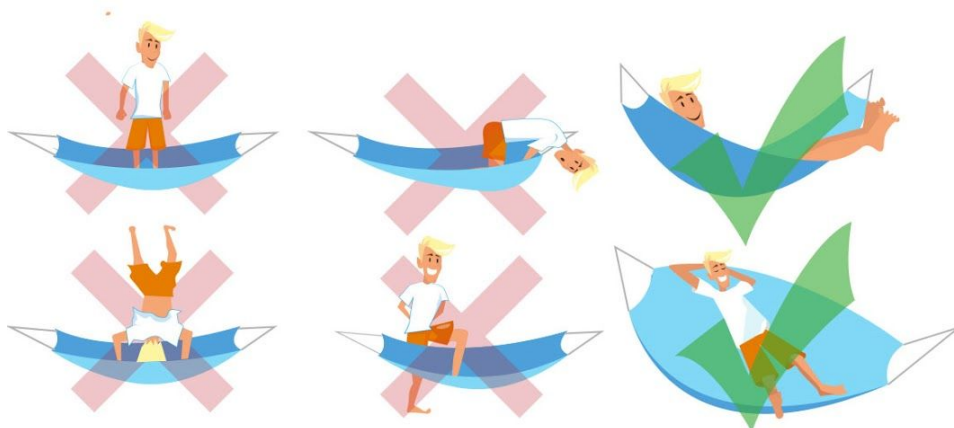
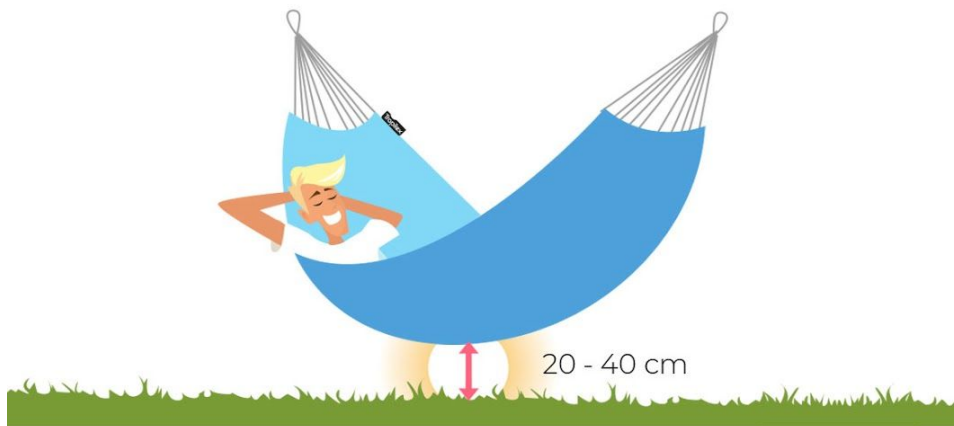
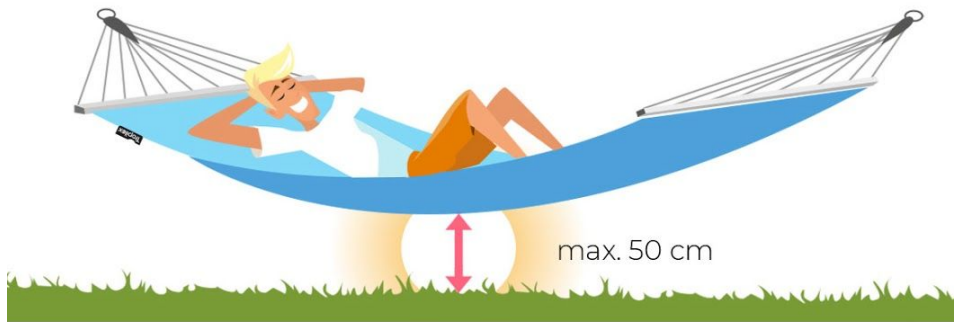
# How it's made



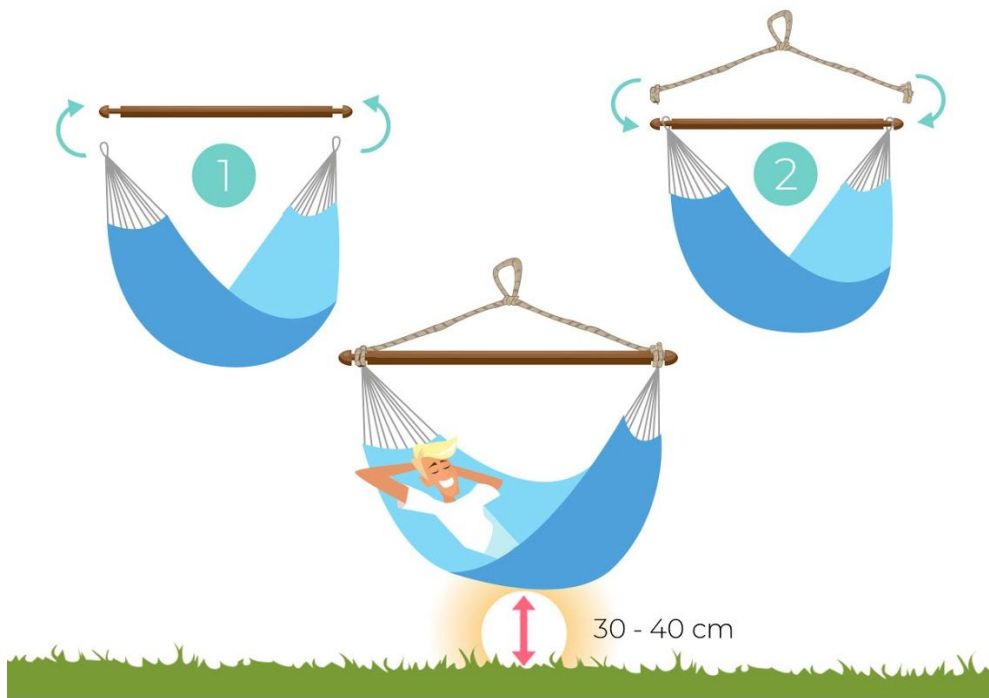
Do you want to see a video how your Colombian product is made?  
Go to [www.tropilex.com/how-its-made](http://www.tropilex.com/how-its-made) or scan the qr code to see the full production process of your Tropilex hammock!

## Assembly instructions

Before you can start relaxing you have to invest 5 minutes of time and some sweat to hang your hammock or hanging chair. We are sorry for that. 😓







Tropilex



## Cleaning, Maintenance & Recycle

Of course you want to enjoy your Tropilex product as long as possible. That's why we advise you to store it dry in autumn/winter and protect it from extreme weather.

### Shorter than specified specifications?

Don't panic: the hammock will stretch. A Colombian hammock will stretch 5-10% by default.

Your Colombian product is made by hand, small differences in size are possible anyway.

### Leave the hammock outside?

Tropilex products can handle rain. This is partly due to the mix of polyester and cotton. If the hammock gets wet once, this is not a problem, but when not in use, we advise you to store the product dry.

Be aware that the sun will fade the colors of the canvas. On sunny days, this can happen quickly.

### How to storage your hammock?

Make sure the cloth is not damp when you store it. Always store the hammock in a dry place and make sure the mice cannot reach it.

### Cleaning

We recommend always washing Tropilex hammocks and hanging chairs by hand.

Tropilex products can be washed in the washing machine if it has a hand wash programme and a maximum temperature of 30 degrees. This is on your own responsibility. We recommend the use of a laundry bag. It is best to tie the attachment cords together so that they do not get entangled. A pillow must be taken out of the cover in advance.

Always let it dry by air: do not use a tumble dryer! Hammocks with a spreading bar cannot be washed in the washing machine because of the attached spreader bar.

### Recycle

Please recycle all packaging material. The hammock can be 100% recycled. Simply bring it to a clothing collection point. They will turn it into new materials.

## Important notices!

Familiarise yourself with the product before using it for the first time. In addition, please carefully refer to the operation instructions and safety advice below. Only use the product as instructed and only for the indicated field of application. Keep these instructions in a safe place. If you pass the product on to anyone else, please ensure that you also pass on all the documentation with it. If you have any questions, please contact us before using the product!

### Intended use

Use the hammock as a lying surface for adults and youngsters age 12 year and up. Do not exceed the maximum weight capacity. This product is intended for personal use only, not for commercial use.

### Safety notice

This item is not a toy. Please keep out of the reach of children.

Make sure the attachment points (trees / walls / beams etc) are firm enough. When in doubt, don't!

The hammock must be installed by adults. Improper assembly may result in risk of serious injury.

No liability is assumed for accidents due to improper use and failure to observe these safety instructions.

### Before you lie down

Always check the ropes, knots and the attachment points to ensure they are (still) strong enough. By rocking or regularly (dis)assembling, they can damage them or get loosen.

Inspect the hammock for wear and friction damage to the surface of the ropes and any connectors. Never use a damaged hammock.

Always sit in the middle of the hammock before you slowly lay down. Never sit down at the edges because the weight must be distributed equally.

You will be most comfortable lying diagonally in a the hammock. Gently rocking in your hammock is possible with this hammock. But never do it too wild because the stand can tip over or there'll be too much pressure on the attachment points. Max. oscillating range is 15°.

## Warranty

The warranty for this product is 1 year from the date of purchase. Should this product show any fault in materials or manufacture within 1 year we will repair or replace it. The warranty applies to defects in material or manufacture. This warranty does not cover product parts subject to normal use or weather.