

Relax with a good feeling!

Manual & Safety Instructions

Tropilex® Hanging Material

Go to www.tropilex.com/instructions to read this manual in your own language:



Important notices

Familiarise yourself with the product before using it for the first time. In addition, please carefully refer to the operation instructions and safety advice below. Only use the product as instructed and only for the indicated field of application. Keep these instructions in a safe place. If you pass the product on to anyone else, please ensure that you also pass on all the documentation with it.

Intended use

This hanging material is suitable for hammocks and hanging chairs. Use it with a hammock or hanging chair as a lying surface for adults and youngsters aged 12 year and up. Do not exceed the maximum weight capacity. This product is intended for personal use only, not for commercial use.

Safety notice

This item is not a toy. Please keep out of the reach of children.

The hanging material must be assembled by adults. Improper assembly may result in risk of serious injury.

No liability is assumed for accidents due to improper use and failure to observe these safety instructions.

Before you lie down

Regularly check the bolts and nuts to ensure they are still tight enough. By rocking or regularly (dis)assembling, they can become loose.

Inspect the ropes, chains and hammock or hanging chair for wear and friction damage to the surface of the ropes and any connectors. Never use a damaged product.

Always sit in the middle of the hammock before you slowly lay down. Never sit down at the edges because then weight must be distributed equally.

By quickly sitting in your hammock or hanging chair or by wobbling, rocking and playing the pressure and weight increases. This has a negative effect on the capacity.

You will be most comfortable lying diagonally in the hammock. Most hammocks will stretch by 5 - 15% in use.

Warranty

The warranty for this product is 1 year from the date of purchase. Should this product show any fault in materials or manufacture within 1 year we will repair or replace it. The warranty applies to defects in material or manufacture. This warranty does not cover product parts subject to normal use or weather.

Maximum capacity

Pay close attention to the maximum capacity of the fixing material. The maximum capacity applies only when the material is properly and professional attached. Combining multiple products can negatively affect the capacity.

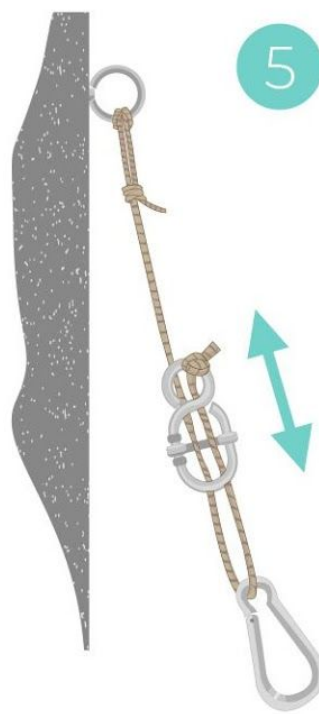
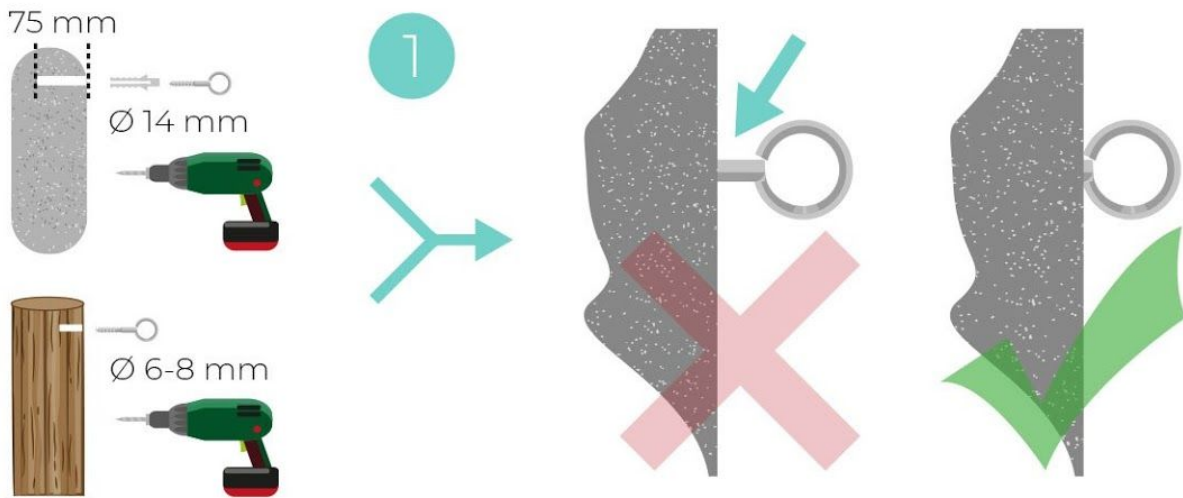
The maximum capacity depends on where and how you attach the fixing material. Check carefully whether the branch, beam, wall, ceiling, fence, etc. is strong enough. When in doubt, do not attach the fixing material!

<i>Fixing - Hammock</i>	<i>SKU</i>	<i>Capacity</i>
Fixing-set 'Simple' white	TR-06040101	200 kg
Fixing-set 'Simple' black	TR-06040102	200 kg
Fixing-set 'Complete' white	TR-06040103	200 kg
Fixing-set 'Complete' black	TR-06040104	200 kg
Fixing-set 'Complete' metal	TR-06040105	200 kg
Eye screw + Carabiner	TR-06030104	160 kg
Fixing 'Wall Hook' 1x	TR-06030105	200 kg
Fixing-set 'Tree Strap'	TR-06055101	200 kg

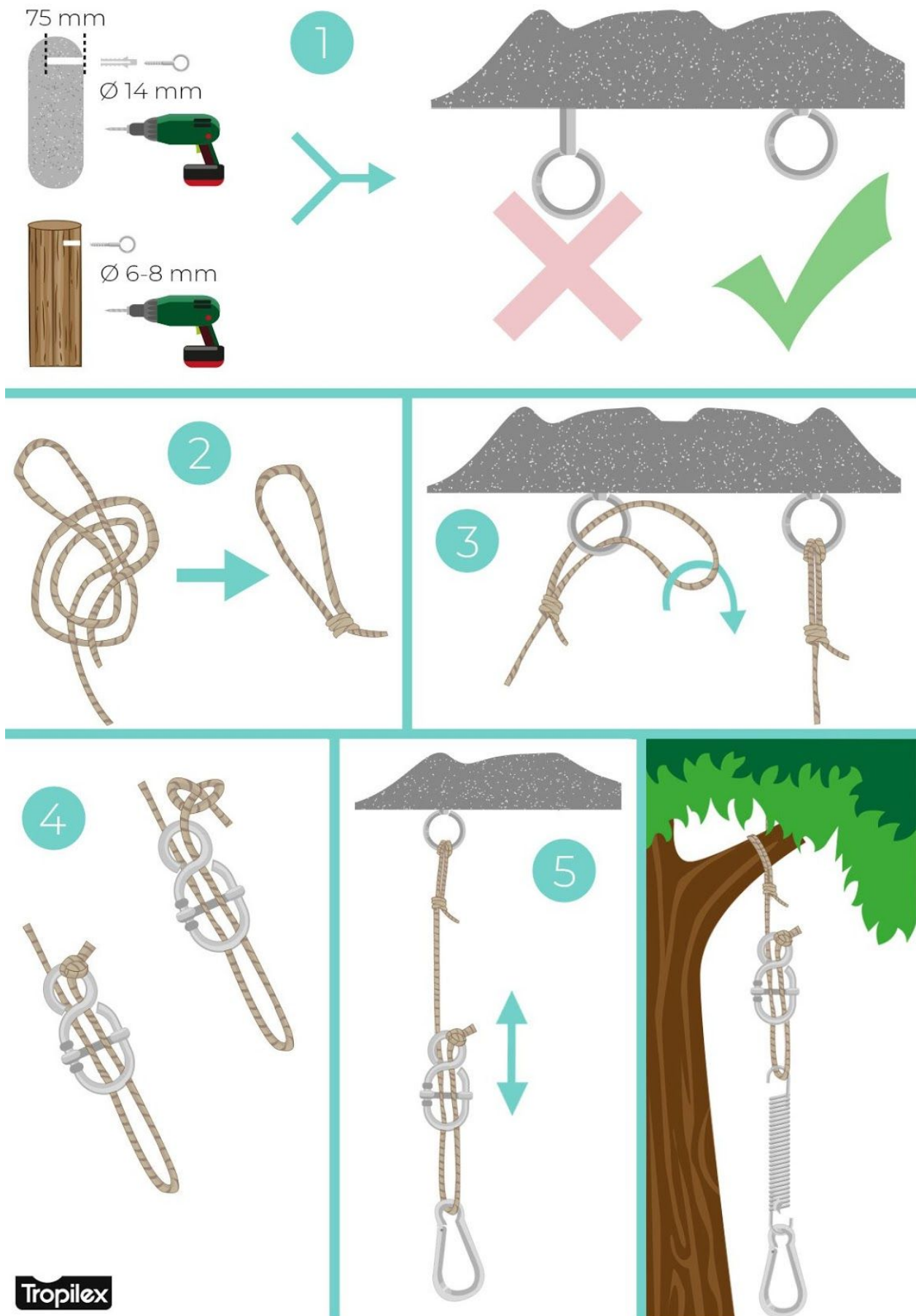
<i>Fixing - Hanging Chair</i>	<i>SKU</i>	<i>Capacity</i>
Fixing-set 'Simple' white	TR-06040201	160 kg
Fixing-set 'Simple' black	TR-06040202	160 kg
Fixing-set 'Complete' white	TR-06040203	160 kg
Fixing-set 'Complete' black	TR-06040204	160 kg
Fixing-set '360' comfort	TR-06040207	180 kg

<i>Fixing</i>	<i>SKU</i>	<i>Capacity</i>
Carabiner 'Small'	TR-06020101	160 kg
Carabiner 'Big'	TR-06020102	200 kg
Chain	TR-06030101	200 kg
Swivel	TR-06030102	200 kg
Spring	TR-06030103	120 kg
Rope 'White' 3 m	TR-06010103	200 kg
Rope 'Black' 3 m	TR-06010203	200 kg
Rope 'White' 5 m	TR-06010105	200 kg
Rope 'Black' 5 m	TR-06010205	200 kg

Hammock Fixing 'Simple' & 'Complete'



Hanging Chair Fixing **'Simple'** & **'Complete'**



How to hang your hammock?

Always stretch your hammock first

Always stretch your new hammock. A new hammock stretches 5 - 15%! A hammock is finished and/or woven by hand. Because of this, there are always small length differences for each hammock.

Simply hang your hammock somewhere and lay down in your hammock. After 5 minutes the hammock has the right length.

Defining the hanging height & length

Some prefer a slightly tighter hanging hammock, others like to lie in a loosely hanging hammock. There is only one rule: you can always hang a hammock looser not tighter. Tighter hanging is only possible if you move the suspension points.

You should hang your hammock with two people. This way you can determine the hanging height and the length first. Each person picks up the (stretched) hammock on one side then determine where the hammock should come.

Don't forget to subtract the hanging material from the distance. The middle of the hammock should be 40-60 cm off the ground.

Hanging a Classic Hammock

A classic hammock should hang as a banana. A little loose between the two suspension points.

The distance between the two suspension points can be determined by a simple rule: The suspension height should be roughly one half of the suspension distance. For example, a classic hammock with a length of 3.5 meters, requires a suspension height of approximately 1.75 meter.

If the distance between the suspension points is greater, the hammock must be mounted a little higher.

Hanging a Spreaderbar Hammock

A hammock with spreaderbar should hang almost tightly between the two suspension points. The tauter the hammock is hung, the greater the comfort. A longer spreaderbar hammock may hang a little more in a curve.

The suspension height should be approximately one third of the distance between suspension points. For example, a spreaderbar hammock with a length of 3.5 meters, requires a suspension height of approximately 1,16 meter.

